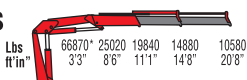
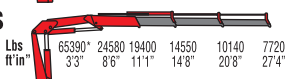




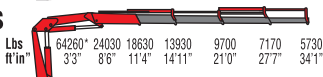
933C/2S



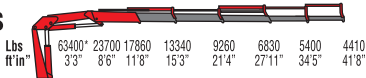
933C/3S



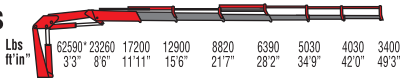
933C/4S



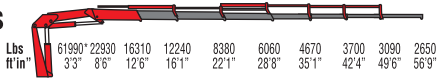
933C/5S



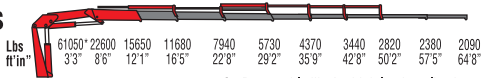
933C/6S



933C/7S



933C/8S



C= Retractable jib, for high load application

*) Theoretical lifting capacity

MODELLI MODELS	MOMENTO LIFTING MOMENT	SBRACCIO ORIZ. HORIZ. EXTENSION	PORTATA AL MAX. SBRACCIO MAX. REACH LIFTING CAPACITY	ANGOLO DI ROTAZIONE SLEWING ANGLE	PESO WEIGHT	DIMENSIONE DIMENSION
	ft Lbs	ft'in"	Lbs	°	Lbs	inches WxHxD
933C/2s	219200	20'8"	10580	400	8270	99x93x47
933C/3s	-	27'4"	7720	400	8750	99x93x47
933C/4s	-	34'1"	5730	400	9260	99x93x47
933C/5s	-	41'8"	4410	400	9630	99x93x47
933C/6s	-	49'3"	3400	400	9990	99x95x47
933C/7s	-	56'9"	2650	400	10250	99x99x49
933C/8s	-	64'8"	2090	400	10520	100x101x52